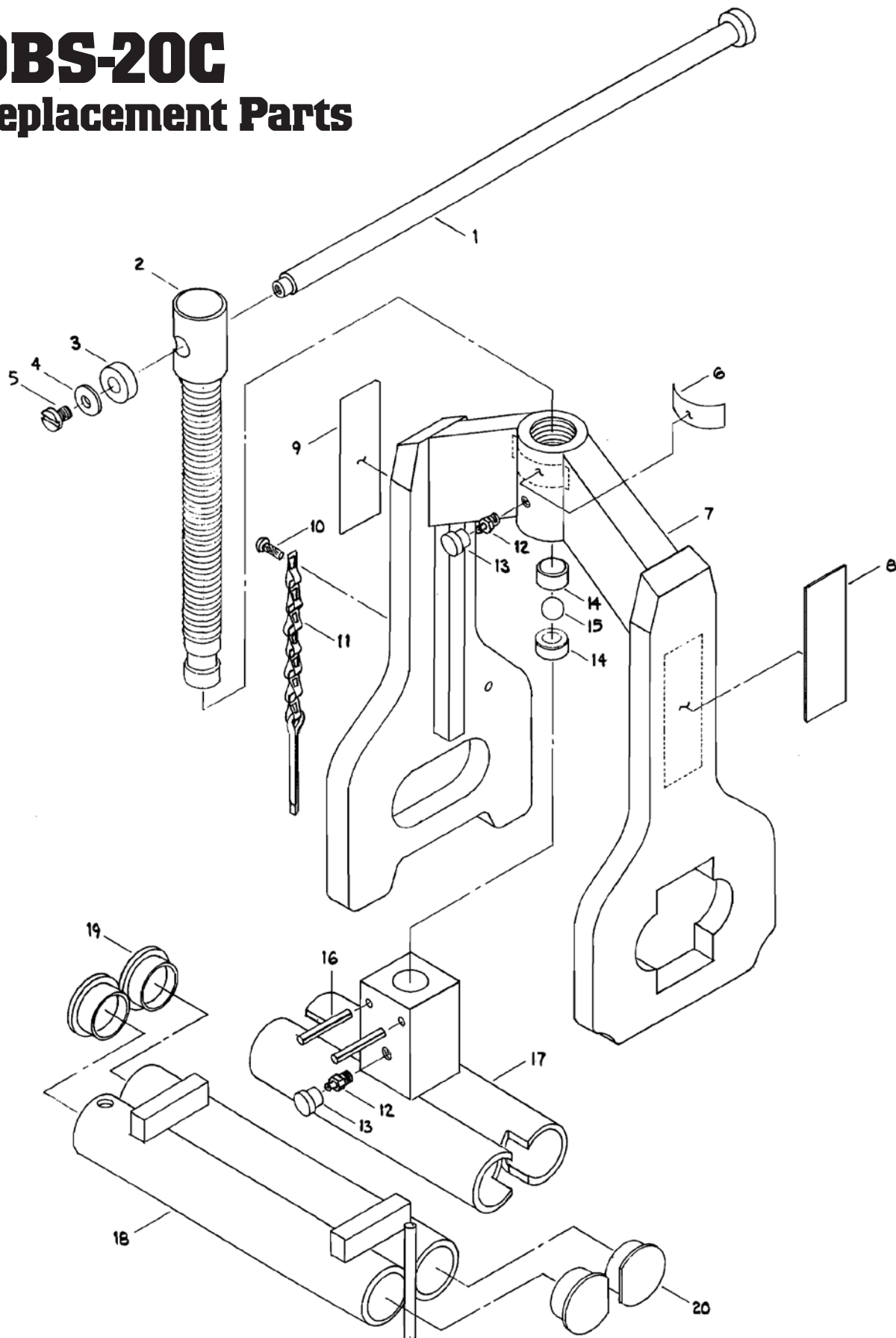


DBS-20C Replacement Parts



MUSTANG
Squeeze Tools

2401 Lockheed Way
Carson City, NV 89706

775.883.0732 Tel
775.883.3372 Fax

mustangmfg@gbis.com
www.squeezetool.com

DBS-20C

Replacement Parts

Item	Description	Qty.	Part#
1	HANDLE, 12"	1	4-20C
2	POWER SCREW	1	2-20C
3	HANDLE BUTTON	1	6-20C
4	#10 FLAT WASHER	1	1-20C
5	10-32 X 3/8" SLOTTED PAN HEAD SCREW	1	5-20C
6	NAMEPLATE, CAUTION/CENTER	1	11-20C
7	DBS-20C FRAME WELDMENT	1	15-20C
8	NAMEPLATE, MODEL/CAPACITY	1	N-4
9	NAMEPLATE, MANUAL OPERATION	1	N-5
10	#8 x 1/2" DRIVE SCREW	1	10-20C
11	CHAIN & PIN	1	8-20C
12	GREASE FITTING	2	P-7
13	HANDLE ASSEMBLY, COMPLETE	1	15-20C
14	BEARING RACE	2	9-20C
15	BALL BEARING	1	7-20C
16	3/16" DIA. x 1-1/4" ROLL PIN	2	12-20C
17	UPPER JAW WELDMENT	1	3-20C
18	LOWER JAW END CAP, SIZE	2	27-20C
19	LOWER JAW END CAP	2	38-20C