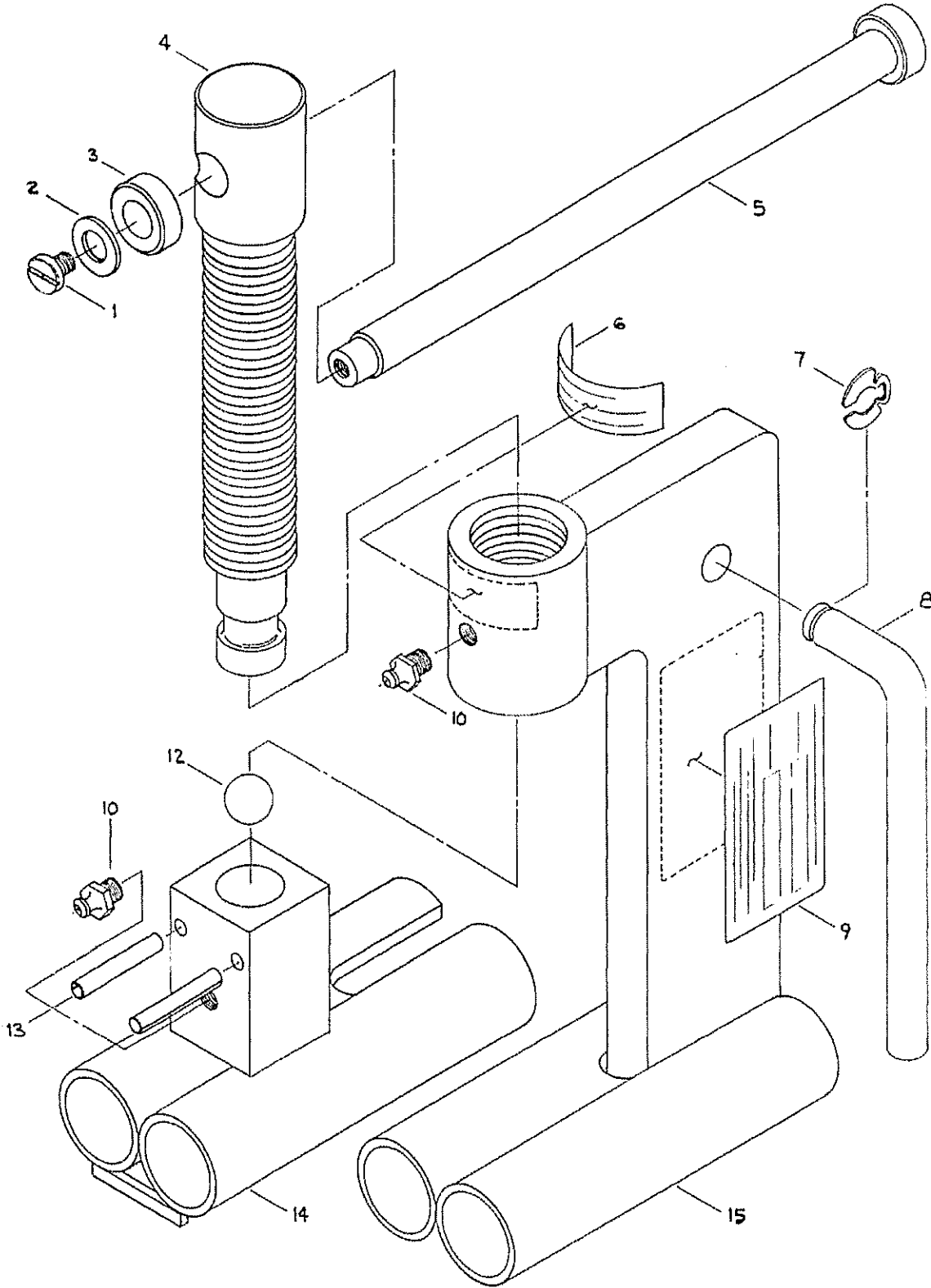


DBS-10A

Replacement Parts



MUSTANG
Squeeze Tools

2401 Lockheed Way
Carson City, NV 89706

775.883.0732 Tel
775.883.3372 Fax

mustangmfg@gbis.com
www.squeezetool.com

**MUSTANG MODEL DBS-10A-S
MANUAL SQUEEZE TOOL PARTS LIST**

ITEM	DESCRIPTION	QTY.	PART NO.
1	10-32 x 3/8" Slotted Pan Head Screw *	1	5-10
2	No. 10 Flat Washer *	1	9-10
3	Handle Button *	1	6-10
5	Handle - 7" Long *	1	4-10
	HANDLE ASSEMBLY - COMPLETE *	1	8-10
	(Incl: Handle, button, washer & screw)		
4	Power Screw	1	2-10
6	Nameplate - Caution/Center	1	10-10
7	Retaining Ring-Torque Arm	1	5304-37
8	"L" Torque Handle	1	13-10
9	Nameplate - Model/Capacity (Please specify size)	1	N-3
10	Grease Fitting	1	P-7
12	1/2" Dia. Ball Bearing	1	7-2
13	3-16" Dia. X 1" Roll Pin	1	P-6
14	Upper Jaw Assembly - Complete for DBS-10A ***	1	3-10
15	Frame Weldment (without upper jaw & power screw)	1	1-10
	*** (includes; ball bearing, roll pins, grease fitting)		