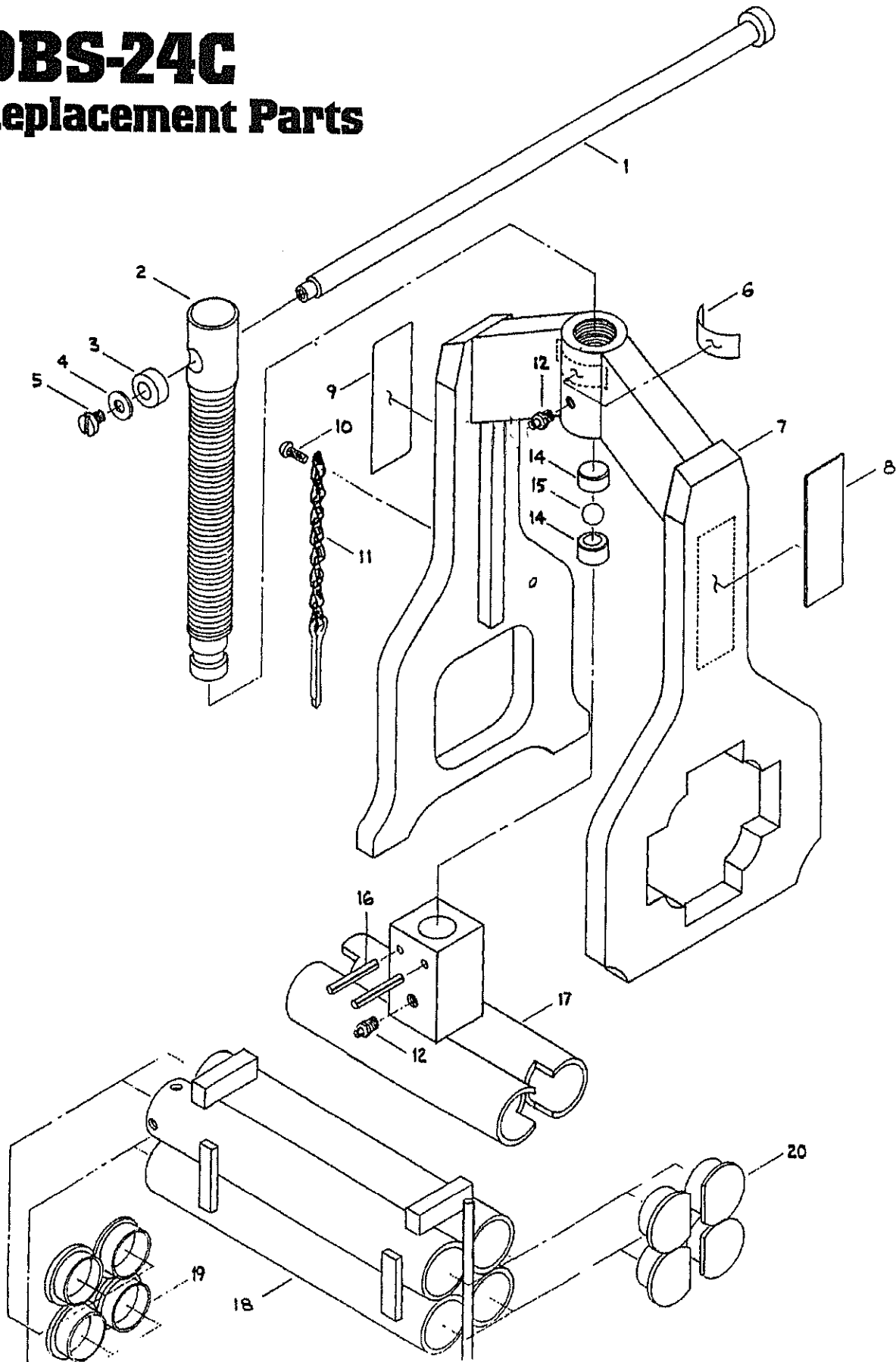


DBS-24C Replacement Parts



MUSTANG
Squeeze Tools

2401 Lockheed Way
Carson City, NV 89706

775.883.0732 Tel
775.883.3372 Fax

mustangmfg@gbis.com
www.squeezetool.com

**MUSTANG MODEL DBS-24C
MANUAL SQUEEZE TOOL PARTS LIST**

ITEM	DESCRIPTION	QTY.	PART NO.
1	HANDLE, 12" *	1	4-24C
3	HANDLE BUTTON *	1	6-24C
4	No. 10 FLAT WASHER *	1	1-24C
5	10-32 X 3/8" SLOTTED PAN HEAD SCREW *	1	5-24C
	HANDLE ASSEMBLY - COMPLETE (Incl. handle, button, washer, screw) *	1	15-24C
2	POWER SCREW	1	2-24C
6	NAMPLATE - CAUTION/CENTER	1	10-24C
7	DBS-24C FRAME WELDMENT (WITHOUT UPPER JAW & POWER SCREW)	1	16-24C
8	NAMEPLATE - MODEL/CAPACITY (Please specify sizes)	1	11-24C
9	NAMEPLATE - MANUAL OPERATION	1	12-24C
10	No. 8 x 1/2" DRIVE SCREW	1	13-24C
11	CHAIN & PIN	1	8-24C
12	GREASE FITTING	2	14-24C
14	BEARING RACES (PAIR)	2	9-24C
15	1/2" DIA. BALL BEARING	1	7-24C
16	3/16" DIA. X 1 1/4" ROLL PIN	2	17-24C
17	UPPER JAW WELDMENT	1	3-24C
18	LOWER JAW (Please specify sizes)	1	LJ-24C
19	LOWER JAW END PLUG - SIZE (Please specify sizes)	4	27-24C
20	LOWER JAW END PLUG - CUT	4	28-24C