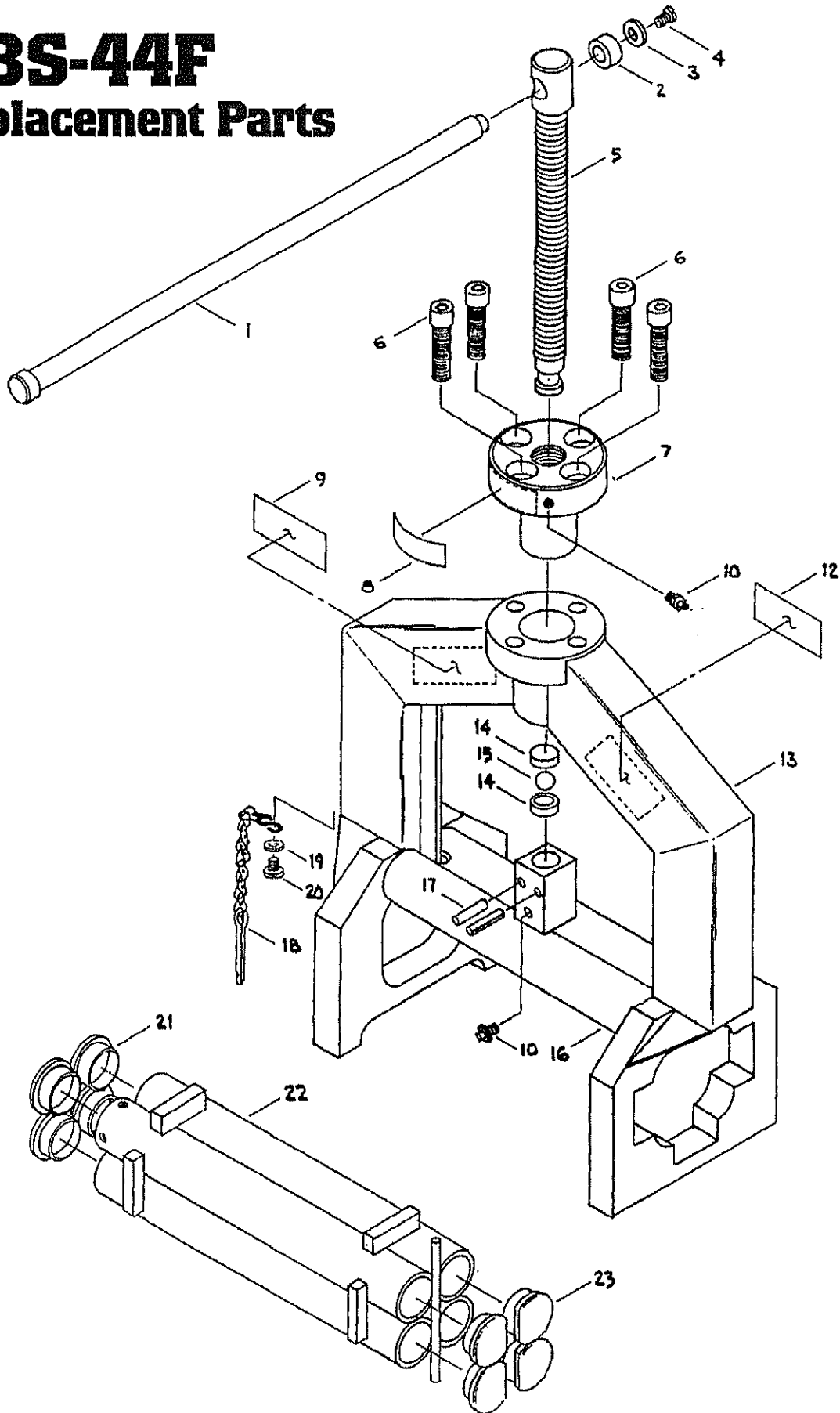


DBS-44F

Replacement Parts



**MUSTANG MODEL DBS-44F
MANUAL SQUEEZE TOOL PARTS LIST**

ITEM	DESCRIPTION	QTY.	PART NO.
1	HANDLE (PLEASE SPECIFY OLD/NEW STYLE) *		
	HANDLE (NEW STYLE) 11/16" Dia. X 24" Long	1	4-44F
	HANDLE (OLD STYLE) 5/8" Dia. X 18" Long	1	4-44OS
2	HANDLE BUTTON *	1	404-6
3	1/4" FLAT WASHER *	1	404-1
4	1/4" - 20 X 3/8" SLOTTED PAN HEAD SCREW *	1	404-3
	* HANDLE ASSEMBLY - COMPLETE (OLD STYLE) 5/8" Dia. X 18" Long	1	444-5OS
	(Incl. Handle, Button, Washer & Screw)		
	* HANDLE ASSEMBLY - COMPLETE (NEW STYLE) 11/16" Dia. X 24" Long	1	444-4HA
	(Incl. Handle, Button, Washer & Screw)		
5	POWER SCREW (PLEASE SPECIFY OLD/NEW STYLE)		
	POWER SCREW (OLD STYLE) (Handle Dia. 5/8" x 18" Long)	1	2-44OS
	POWER SCREW (NEW STYLE) (Handle Dia. 11/16" x 24" Long)	1	1-40C
6	1/2" - 13 NC x 1 3/4" Socket Head Cap Screw	4	404-4
7	BOLT ON DRIVE NUT	1	103-40F
8	NAMEPLATE/CAUTION STICKER	1	14-8
9	NAMEPLATE- MODEL/CAPACITY (Please specify sizes)	1	40-9
10	GREASE FITTING	1	404-13
12	NAMEPLATE/MANUAL OPERATION	1	14-10
13	DBS-44F FRAME WELDMENT (W/O UPPER JAW & POWER SCREW)	1	144-2
14	BEARING RACE (PAIR)	2	404-8
15	BALL BEARING	1	404-7
16	UPPER JAW WELDMENT	1	6-840F
17	3/16" Dia X 1 1/4" ROLL PIN	2	404-5
18	CHAIN & PIN	1	404-9
19	#10 FLAT WASHER	1	404-19
20	10-32 X 3/8" SLOTTED PAN HEAD SCREW	1	404-10
21	LOWER JAW END PLUG - SIZE (Please specify sizes)	4	404-11
22	LOWER JAW (PLEASE SPECIFY OLD/NEW STYLE)		
	LOWER JAW (NEW STYLE) LENGTH 11 1/2" (OLD STYLE) LENGTH 12 1/4"	1	LJ-44F
23	LOWER JAW END PLUG - CUT	4	404-12