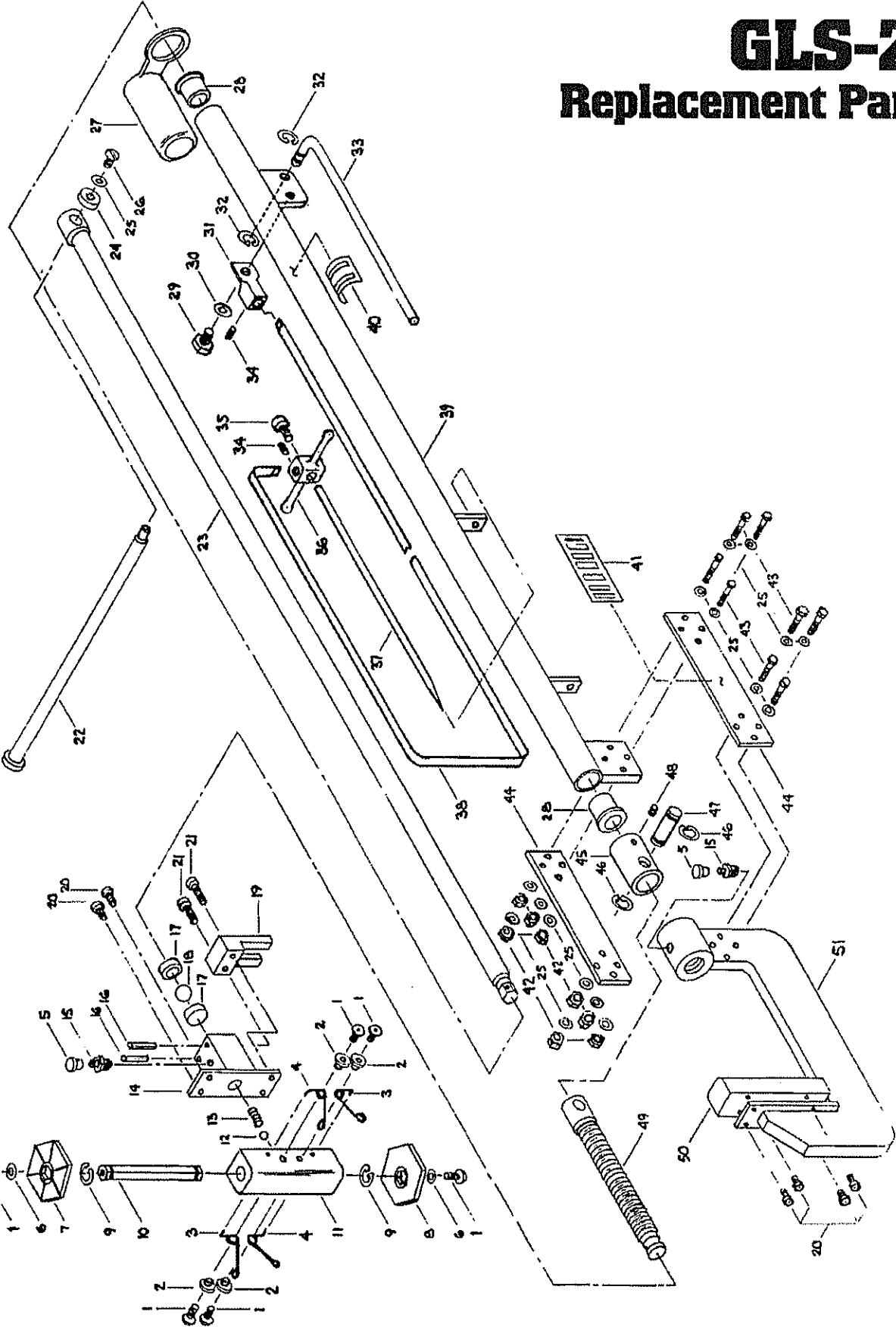


GLS-26 Replacement Parts



MUSTANG
Squeeze Tools

2401 Lockheed Way
Carson City, NV 89706

775.883.0732 Tel
775.883.3372 Fax

mustangmfg@gbis.com
www.squeezetool.com

ITEM	DESCRIPTION	QTY.	PART NUMBER
1	10-32 NF x 1/2" Button Head Cap Screw	6	1050-BH
2	Bushing, Centering Spring	4	GS-13
3	Right Centering Spring	2	GS-17R
4	Left Centering Spring	2	GS-17L
6	#10 Flat Washer, 1/2" O.D. Aircraft	2	AN940-7
7	Gap Stop Disc - Label	1	GS-20N
8	Gap Stop Disc (Please specify Front or Rear Disk)	1	GS-20
9	Retaining Ring - Gap Stop 7/16"	2	5304-43
10	Gap Stop Disc Shaft	1	GS-18
11	Upper Jaw	1	GS-21
12	1/4" Dia. Detent Ball	1	25-B
13	Detent Spring	1	H-92
14	Bearing Block & Mounting Plate	1	GS-24
15	Grease Fitting	2	P-7
16	3/16"x 1 1/4" Spring Pin	2	P-8
17	Bearing Race	2	9-2
18	1/2" Dia. Ball Bearing	1	7-2
19	Upper Jaw Guide Block	1	GS-16
20	10-32 NF x 1/2" Socket Head Cap Screw	6	1050
21	10-32 NF x 1" Socket Head Cap Screw	2	1010
22	Drive Handle, 12" Length *	1	4-212
23	Drive Shaft Weldment	1	GS-25
24	Drive Handle Button *	1	6-2
25	No. 10 Flat Washer	1	W25SS
26	10-32 x 3/8" Slotted Pan Head Screw *	1	1037
	HANDLE ASSEMBLY - COMPLETE (handle,button,washer,screw) *	1	GS-26H
27	Holster, Static Grounding Cable (SEG-30)	1	SG-10
28	Bushing, Extension Tube	2	GS-19
29	3/8"-24 NF x 1/2" Hex Head Cap Screw, Grd. 5	1	3750
30	3/8" Flat Washer - SAE	1	W37S
31	Attachment Lug, Static Grounding (SEG-30)	1	SG-4
32	Retaining Ring - Torque Arm 3/8"	2	5304-37
33	Torque Handle	1	GS-11
34	1/4"-20 x 3/8" Socket Set Ser. Half Dog (SEG-30)	2	2537
35	1/4"-20 x 3/4" Socket Head Cap Screw (SEG-30)	1	2575
36	Ground Spike Handle (SEG-30)	1	SG-3
37	12" Copper Grounding Spike (SEG-30)	1	SG-2
38	Flat Braided Grounding Cable - 5 Ft. (SEG-30)	1	SG-5C
39	Extension Tube Weldment	1	GS-22
40	Nameplate - Model & Capacity	1	N-3
41	Nameplate - Gap Stop Selection	1	GS-26N
42	1/4"-20 NC Hex Nut	8	25HN
43	1/4"-20 NC x 1 3/8" Hex Head Bolt Grade 5	8	25HC
44	Attachment Plate	2	GS-10
45	Coupling - Shaft/ Power Screw	1	GS-14
46	Retaining Ring - 7/16" Coupling Ring	2	5100-43
47	Coupling Pin	1	GS-15
48	1/4"-20 x 3/8" Socket Set Screw - Cup Pt.	1	2537-SS
49	Power Screw	1	2-20
50	Lower Jaw	1	GS-12
51	FRAME (w/o upper jaw and power screw)	1	GS-23